

Year 10 Exams

May - June 2026

“Study for knowledge, not just grades.”

“The chapters you study today write the story of your future.”

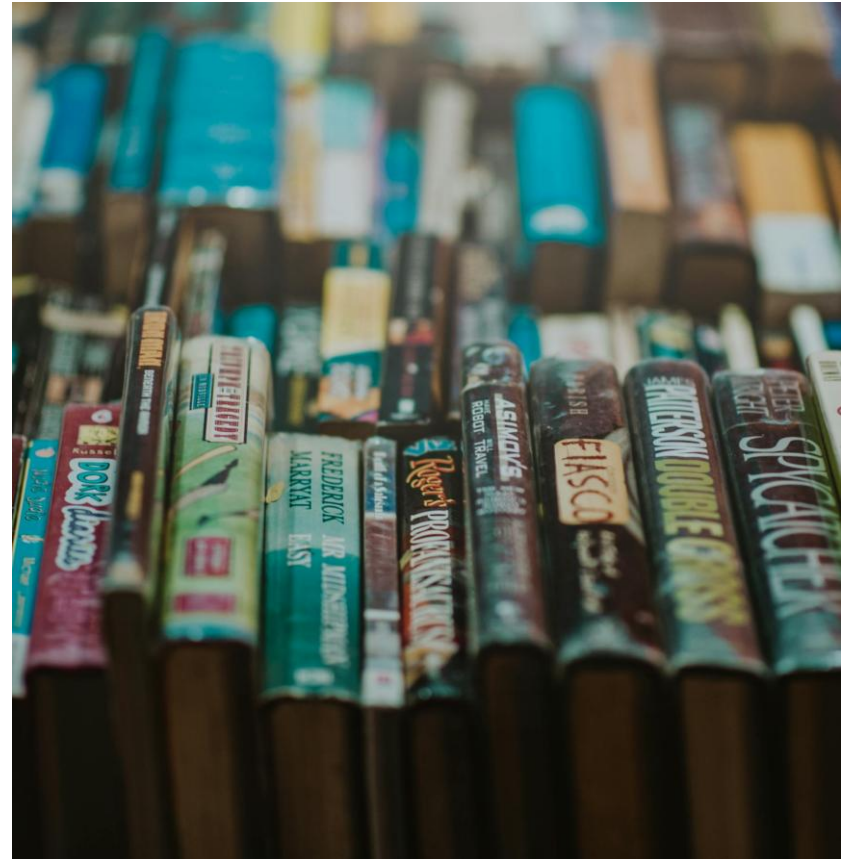
GCSE English Language

- Your first two exams are not mocks, but your real GCSE English Language examinations.
- Arrangements for these exams are as follows: You will go to your tutor group as normal to be registered, then your tutor will escort you to the hall at 8.40 am.

Subject	Duration	Day/Date	Subject	Duration
A.M.			P.M.	
English Language Paper 1	1hr 45	Thursday 21 st May 26		
English Language Paper 2	1hr 45	Friday 5 th June 26		

GCSE English Language

- The day before each exam, you will have a ‘hothousing session’. These are:
 - Wednesday 20th May P1 & P2
 - Thursday 4th June P4 & P5
- You will be given a seating plan for these sessions by your teachers.
- You also have access to the virtual classroom where you will find lots of resources to help you.
- On your exam timetable, it mentions Speaking and Listening assessments – **do not panic!** These are already completed, 7th May is just our deadline for submitting them.





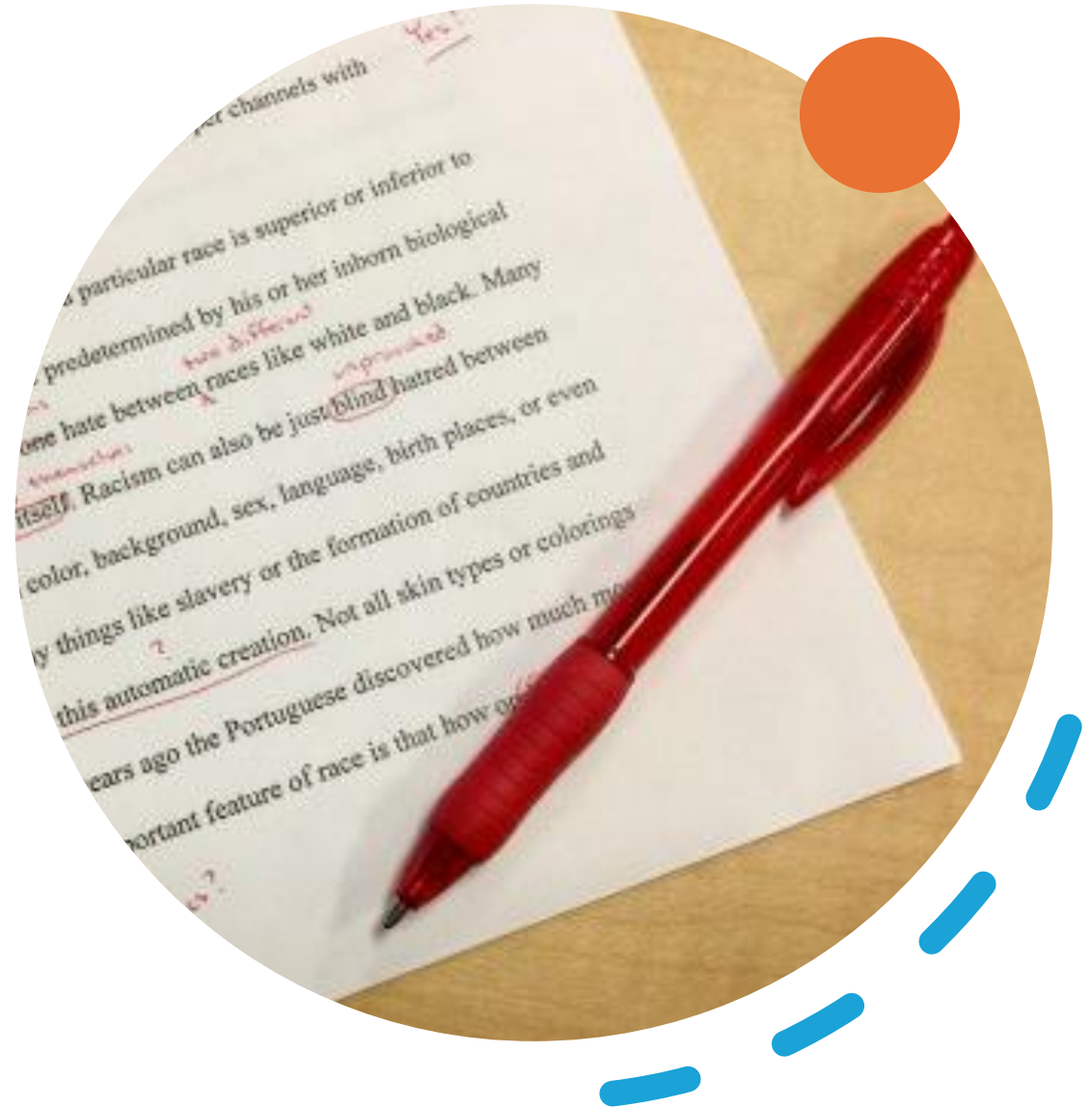
What is the point of mocks?

- They enforce the start of **revision** earlier than you might have started otherwise.
- They mean you are **familiar** with exam paper layout and exam procedures.
- They give you an **indication** of how well you might do in the real exam.
- Most importantly: they point out the bits you **don't know!**



Why is that important?

- Everyone wants to come out of an exam having answered all of the questions well. But, this can lead to **too much confidence** and a lack of revision before the **real exams**.
- If there is a question you didn't do well on, you know you need to **revise** that area **harder** or in **more depth**, or you may need to practice your **exam technique**.
- You are allowed to get it wrong at this point – but do not ignore those mistakes!

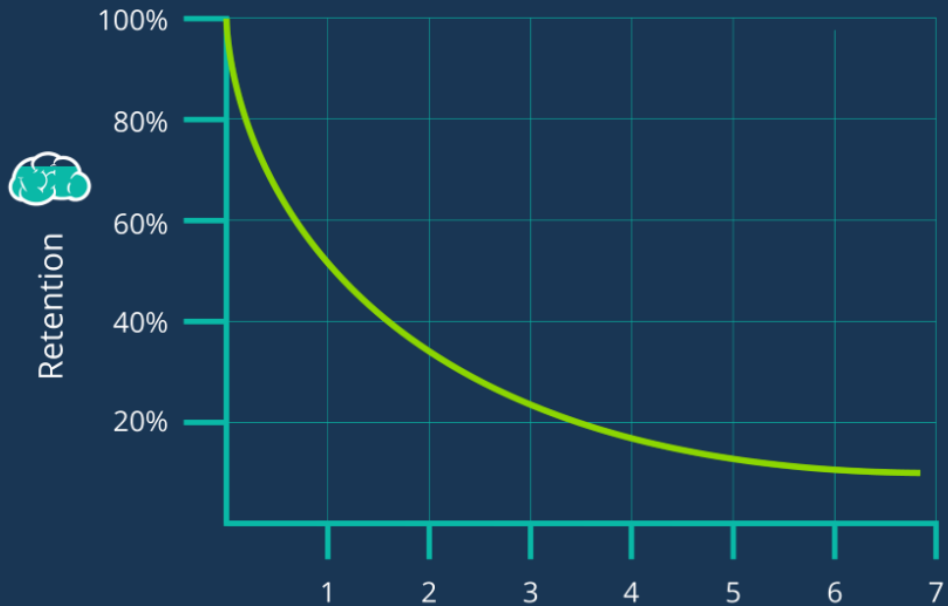




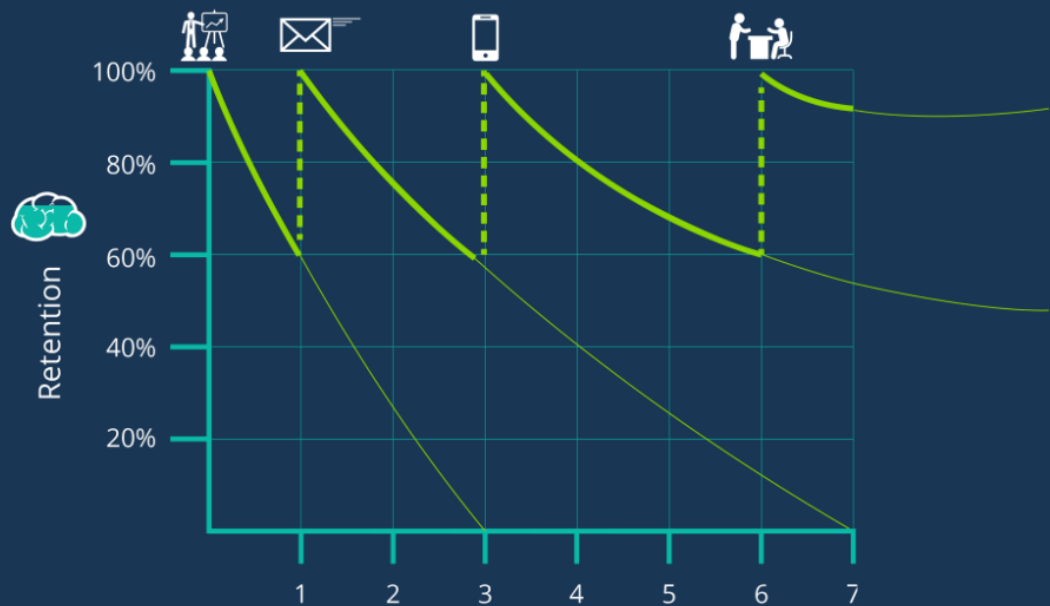
Don't leave all the hard work until Year 11!

- Ebbinghaus discovered the nature of memory loss over time. The graph illustrates that when you first learn something, the information disappears at an exponential rate, i.e. you lose most of it in the first couple of days, after which the rate of loss tapers off.
- As you can see, the more you revise what you've learnt, the flatter your forgetting curve gets.

THE FORGETTING CURVE



COMBATING THE FORGETTING CURVE





How should I revise effectively?

- [3 tips on how to study effectively](#)
- Re-reading and highlighting are **not** effective methods.
- **Self-quizzing** is effective.
- **Interleaving** subjects and topics is effective.
- Answering and marking **past papers** is effective.
- There are lots of tips and links in your **booklet**.





Make a revision timetable

- Use the template in your booklet to help you.

Day	4pm	5pm	6pm	7pm	8pm
Monday					
Tuesday					
Wednesday					
Thursday					
Friday					
Weekend	Morning		Afternoon		Evening
Saturday					
Sunday					



Exam timetable

- This is in your booklet.
- All exams will be in the **gym** unless otherwise stated.
- **Normal rules** for uniform, jewellery, behaviour apply.
- Students with **examination access arrangements** will be informed of room arrangements **individually**.

AM Subject	Duration	Day/Date	PM Subject	Duration
9am Start (START OF P1)		2-1-2 LESSON FORMAT	1pm start (START OF P4)	
9am Start		Mon 8th June	1pm start	
			Yr 10 Maths Paper 1 (Non calculator)	1hr 30m
		Tues 9th June		
Japanese Writing (James Kay clash)	1hr 25m			
Yr 10 Biology	1hr 45m			
Yr 10 Combined Biology	1hr 15m			
9am Start		Wed 10th June		
		Thurs 11th June	1pm start	
			Yr 10 History	1hr 20m
		Fri 12th June	1pm start	
			Yr 10 Geography	1hr 30m
		Mon 15th June	1pm start	
			Yr 10 Maths Paper 2: Calculator	1hr 30m
9am Start		Tues 16th June	1pm start	
Yr 10 Chemistry	1hr 45m		Yr 10 Health & Social	1hr 15m
Yr 10 Combined Chemistry	1hr 15m		Yr 10 P.E.	
9am Start		Wed 17th June	1pm start	
Yr 10 Business	1hr 30		Yr10 German Reading (F)	45m
Yr10 French Writing (F)	1hr 10		Yr10 German Reading (H)	1hr
Yr10 French Writing (H)	1hr 15m			

9am Start		Thurs 18th June	1pm start	
Yr 10 Physics	1hr 45m		Yr 10 Design & Tech	1hr 30
Yr 10 Combined Physics	1hr 15m		Yr10 French Reading (F)	45m
			Yr10 French Reading (H)	1hr
9am Start		Fri 19th June	1pm start	
Yr 10 Maths Paper 3: Calculator	1hr 30m		Yr10 German Writing (F)	1hr 10m
			Yr10 German Writing (H)	1hr 15m
		BACK TO 2-2-1 FORMAT		
9am Start		Mon 22nd	11.20 start – (Periods 3 & 4)	
Yr 10 Food and Nutrition	1hr 30m		Yr 10 Media	1hr 30
Yr 10 Drama	1hr 30m		Yr 10 History	1hr
+ (7 students who clash in next period)				
		Wed 1st July		
Photography	All Day		Photography	All Day
		Thurs 2nd July		
Art	All Day		Art	All Day
		Fri 3rd July		
Textiles	All Day		Textiles	All Day
		Wed 24th June		
Contingency Day for public exams			Contingency Day for public exams	



Arrangements for exams

Morning exams:

1. **Go to your tutor room first, register, then go to the hall at 8:40.**
2. Take everything you need for the exam out of your bag. You will either need a clear pencil case, or you will need to carry your stationery in your hand. You will be allowed to take a bottle of water into the exam room, but the label **must** be removed.
3. Place your bag on the stage, hand in valuables, phones, watches for safe keeping and sit down.

Exams after lunch (when the timetable is 2-1-2):

Arrive at 12:50, 10 minutes before the end of lunch and get ready to be called in.

Exams after break (when we go back to 2-2-1):

Stay in the hall and get ready to be called in. Bags on stage etc.

**If you do not have an exam, you must go to your normal lessons.
It is vital that you follow these instructions carefully.**

Arrangements for exams

Before the exam

- Sit quietly and wait to be called into the gym.
- Enter the gym in silence and in the order called, then sit in your designated seat.
- Listen carefully to the instructions of the invigilators.
- Check you have the correct paper and equipment and raise your hand if unsure.

During the exam

- Full exam board conditions apply. Never attempt to communicate with another student or attract their attention.
- Write in black pen.
- Raise your hand if you need anything.
- Follow invigilator instructions in case of emergency.
- Use all of the available time. You will not be allowed to leave early. There will be a clock at the front of the room.



Arrangements for exams

- You are under exam conditions until you have left the room.
- When instructed by the invigilators, leave silently and go to the Hall to collect your bag.
- Collect valuables from Reception.
- **Go straight back to your normal lesson.** Do not wait around in the Hall or disturb lessons by being noisy in the corridors

The Exams Team

Mrs Melton is the **exams officer**, and she also has a team of invigilators.

The role of the invigilators:

- **Maintaining Order and keeping the exam conditions FAIR:**
Invigilators are essential for maintaining order during examinations, ensuring a fair testing environment for all students.
- **Rule Enforcement:** They ensure that all examination rules are followed, preventing any potential cheating or malpractice. Invigilators will check your photocard to make sure that you are sitting in the correct place – but it is up to you to make sure the exam you are sitting is the correct paper/ level.
- **Student Assistance:** Invigilators provide necessary assistance to students during exams, helping to clarify any doubts they may have.



Equipment

Please ensure you have the correct equipment for mock exams.

Check now as you may have to buy these and shops may be running low on supplies.

Clear Pencil case, Black pens, Pencils, Rubbers, Rulers, Calculators, Protractors & Compass.

The Joint Council for Qualifications does not require centres (school) to provide candidates with these.

As a candidate sitting an exam you are responsible for providing your own equipment. However, we do provide equipment on desks for you. The only exception to this is a **calculator – please remember to bring your own.**

Note: Any type of erasable pen is not allowed!!





Watches

Prohibited Devices

- Students are not permitted to wear any watch during the exam.
- It takes too long to work out which are or aren't smart watches, so everything is banned.
- You can't wear a Fitbit or any other electronic device around your wrist.
- You can't wear smart glasses.
- EarPods and other electronic devices need to be in your bag (and should be anyway).



Water bottles and drinks

- Clear Bottles Only
- Students are permitted to use only clear bottles, ensuring visibility of the contents during the exam. It can only be water.
- No Labels Allowed - bottles must be free of any labels to maintain a standardised and distraction-free exam environment.
- Invigilators have the authority to ask you to remove the lid so they can check there is nothing hidden inside the lid.
- Hydration During Exams: having water available helps keep students hydrated, enhancing focus and performance during the exam.



Other

Tissues

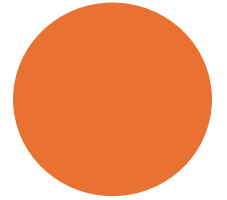
- If you need a tissue, then ask the invigilator for one – you can't bring your own in case you have written on them.

Hands

- Do not write on your hands/ make sure they are clean – the invigilator will not know when any designs were added so it can be seen as an attempt to cheat.

Starting your exam

- The invigilator will tell you when you can pick up your pen, so don't sit down and start writing.





What is malpractice?

It means not complying to rules and regulations in relation to the examination. There will be a formal warning letter sent home for anyone not complying with exam board regulations, as well as in-school sanctions.

Examples are:

- Breach of instructions from an invigilator
- Failing to abide by the conditions of supervision
- Working with other candidates
- Copying from another candidate
- Allowing work to be copied
- Deliberate destruction of another candidates' work
- Disruptive behaviour in the exam room
- Misuse of materials or technology to support with the exam

This includes not being quiet outside an examination room and disturbing those left inside.

Potential Penalties for Malpractice

The awarding body is notified immediately. They may decide to:

- Take no action
- Carry out a full investigation

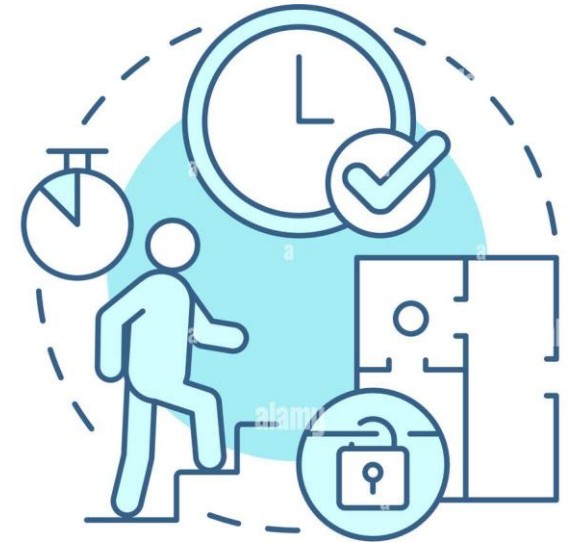
Possible sanctions include:

- Warnings
- Loss of marks
- Disqualification
- Barred from taking all exams for a set period
- Permanent record on your individual results



On the day

- Have breakfast and check your bag for all equipment for the exams today.
- Be on time! If you are late, you will not get the full exam time – we cannot wait for you to begin.
- (This is different in the real exam – to be explained in the future).



BE ON TIME



- Read the instructions on the front of the paper carefully to ensure you answer the right number of questions.
- On some papers you will have a choice of questions.
- If you answer more questions than you should, only the first ones will be marked.
- If you finish early:
 - Check you haven't missed any questions
 - Proofread and see if you can correct any spellings / improve any answers.
 - Sometimes one extra mark can mean you go up a grade so use every minute and grab every available mark.



Mock Results

- You will receive your results in **assembly** in early July, once all papers are complete, marked, moderated and entered.

